



Peter F. Hurst Planetarium Social Story

Thank you for your interest in visiting the Peter F. Hurst Planetarium!

This Social Story is a preview guide for individuals with Sensory Processing and Autism Spectrum differences and their parents and caregivers to assist in preparation for their visit.

Tips for a Great Visit:

Please feel free to bring what you need to have a successful visit, including:

- Communication tools, boards, or devices
- Mobility devices, including wheelchairs, strollers, or wagons
- Sensory accessories, equipment, headphones, and fidgets
- Snacks/drinks (but please consume these in the lobby or outdoors)
- Please ask staff for suggestions on lower noise areas that may be suitable for breaks if necessary

Please be mindful that:

- We understand that you are the expert when it comes to your child, and best know how to address their needs. We expect that a caregiver will accompany their loved one through their visit.



My Visit to the Peter F. Hurst Planetarium



To get to the Planetarium, we will drive through the Ella Sharp Park until we get to the Ella Sharp Museum sign.



Then, we will park our car in the parking lot in front of the Planetarium and walk to the entrance.



I enter the Planetarium and see different displays in the Lobby. An adult with my group will talk to someone at the front table to get tickets. I see the bathroom to the right of the entrance. It is a single room bathroom, so if I need help, an adult can go in with me.



After we get our tickets, I look around the Lobby and see different displays about the solar system, space travel, and a history of the Planetarium.



When it's time for the show to start, we go into a big room with a dome ceiling. I sit down in one of the chairs with my group. I take off my coat and get comfortable to watch the show.



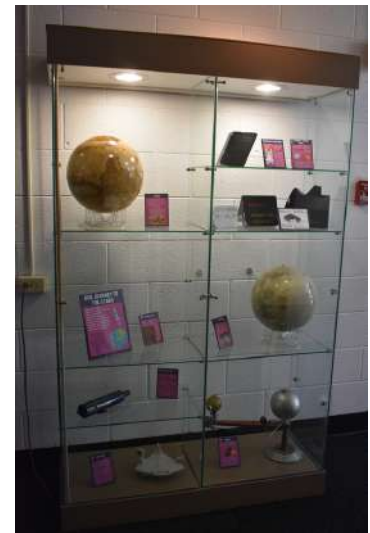
After everyone is in their seats, the Planetarium Operator tells us the rules. I need to stay in my seat and be quiet for the entire show. I can't use anything that makes light during the show, including phones, tablets, smartwatches, and light-up shoes. If I need to go to the bathroom or want to leave, I need to ask my adult to take me back to the Lobby.

The room slowly gets dark, until it is like a movie theater, then the dome above me lights up as the show begins.



While the show is happening, there might be loud sounds and bright flashes/flashing lights.

If I am overwhelmed, I can ask my adult to go back to the Lobby for a break.



When the show is over, I walk back out to the Lobby and can look around at the displays.



After the Planetarium, we can explore the grounds of the surrounding Ella Sharp Park and we can visit the Ella Sharp Museum.